

**MOR50**

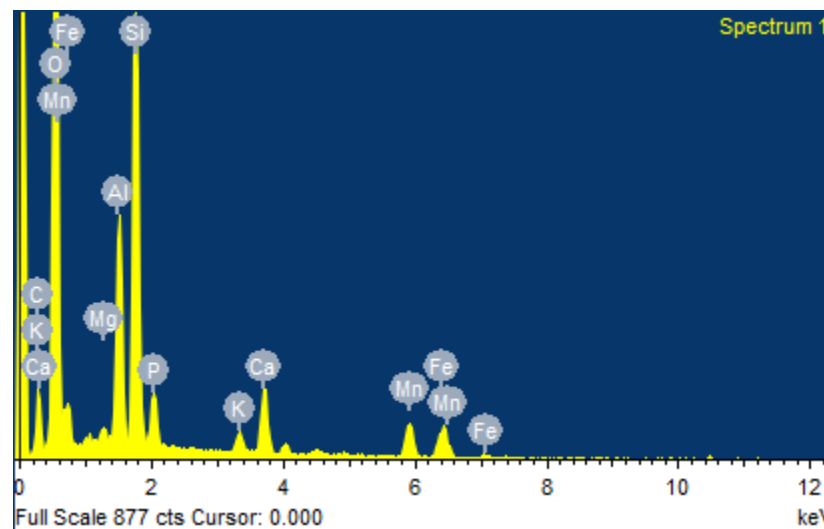
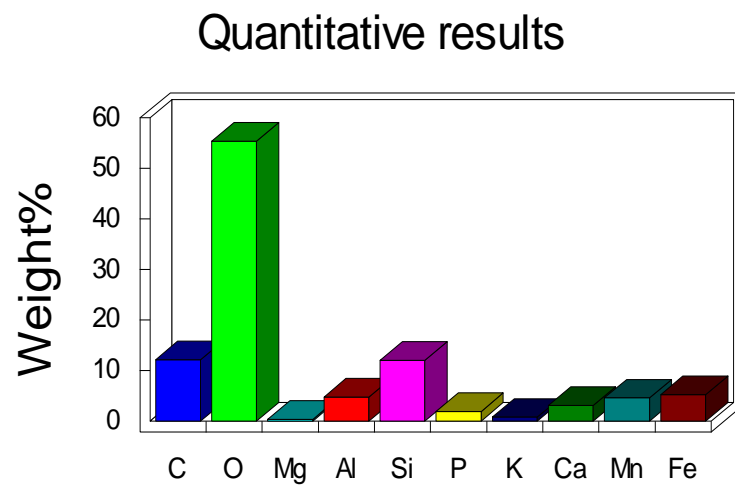
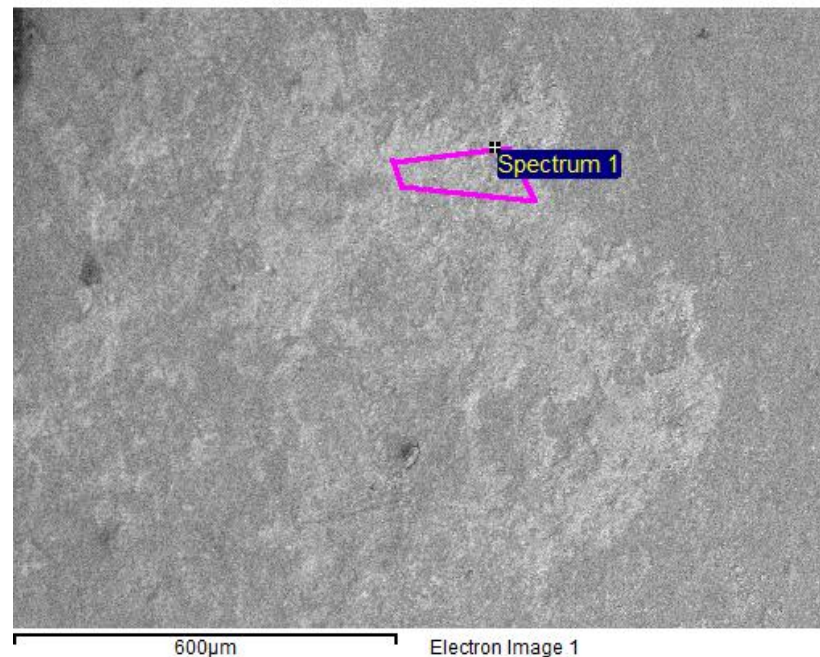


MOR50.1 2 measurements on different spots of the same R

Sample: MOR50.1

Type: Default

Element	Weight%	Atomic%	
C K	12.13	18.64	
O K	55.36	63.86	
Mg K	0.32	0.24	
Al K	4.73	3.23	
Si K	12.04	7.91	
P K	1.83	1.09	
K K	0.74	0.35	
Ca K	3.04	1.40	
Mn K	4.56	1.53	
Fe K	5.25	1.73	
Totals	100.00		



Sample: MOR50.1

Type: Default

Element	Weight%	Atomic%	
C K	4.91	7.97	
O K	58.54	71.34	
Mg K	0.66	0.53	
Al K	7.52	5.44	
Si K	10.06	6.99	
P K	2.35	1.48	
K K	1.19	0.59	
Ca K	3.38	1.65	
Ti K	0.40	0.16	
Mn K	5.35	1.90	
Fe K	5.65	1.97	
Totals	100.00		

